



Automated Transporting Solution

G-MATIC HP 10

Capacity 1.0t | Series 8928

Autonomous transport miracle

- Autonomous transport solution for medium to long distances in mixed operations
- Load capacity 1000 kg and maximum speed of 8 km/h for fast transfer of loads
- Natural feature navigation for optimal orientation without additional infrastructure
- Independent avoidance of obstacles and flexible load pick-up for trouble-free process flows
- Cloud-based software control for effortless implementation and optimum adjustment

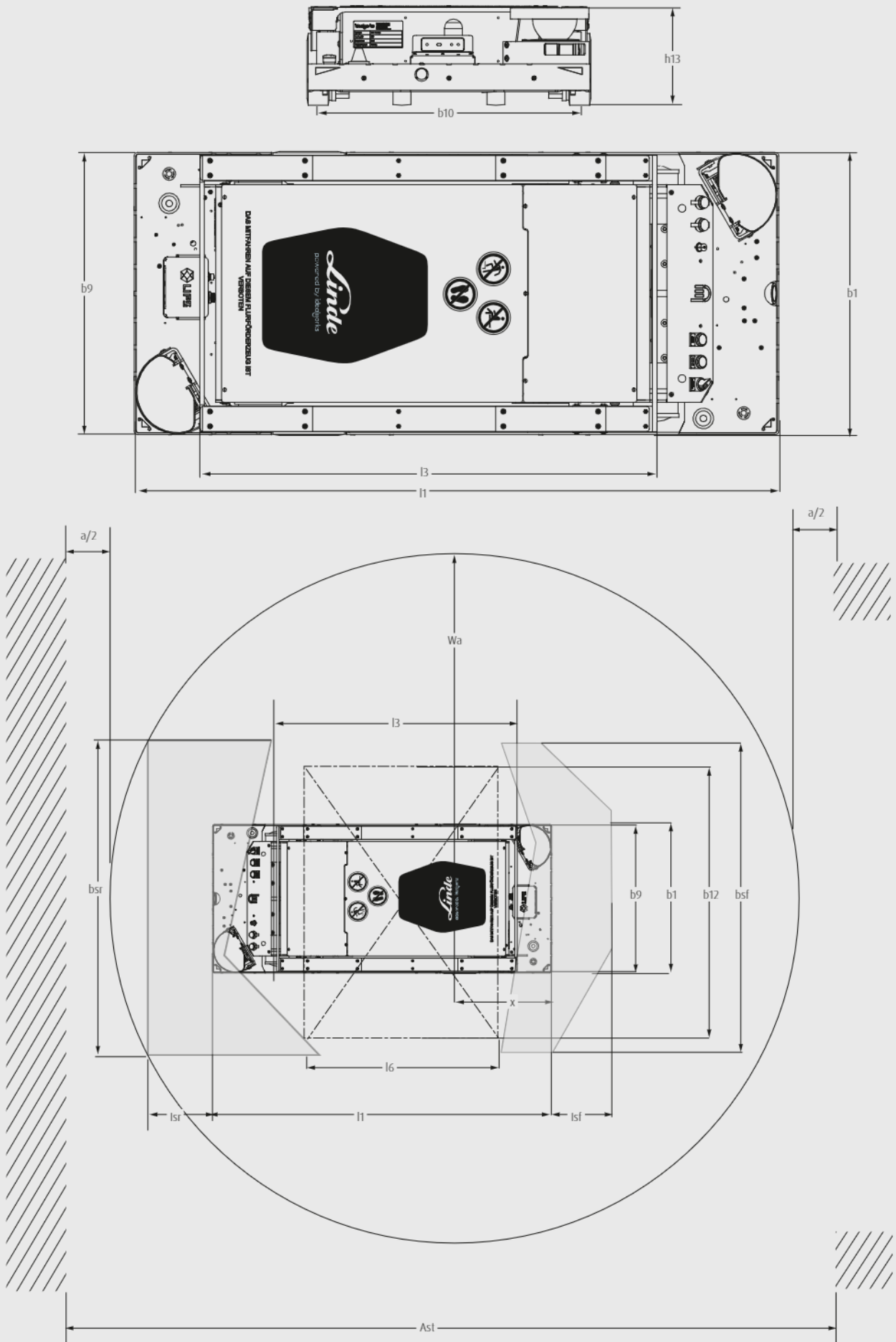
TECHNICAL DATA (According to VDI 2198)

Characteristics	1.1	Manufacturer		Linde MH
	1.2	Model		C-MATIC HP 10
	1.2.a	Series		8928-01
	1.3.	Power Unit		Battery
	1.4	Operation		Automated
	1.5	Load capacity/Load	Q (t)	1.0
	1.8	Axle centre to fork face	x (mm)	390
Weights	2.1	Service weight	(kg)	170 ¹⁾
Wheels/Tyres	3.1	Tyres rubber, SE, pneumatic, polyurethane		Vulkolan
	3.4	Auxiliary wheels (dimensions)	(mm)	160 × 45
	3.5	Wheels, number front/rear (x = driven)	(∅)	2x +2
	3.6	Track width, front	b10 (mm)	584
Dimensions	4.4	Lift	h3 (mm)	40
	4.15	Height, lowered	h13 (mm)	222 ²⁾
	4.16	Loading platform, length	l3 (mm)	1021 ³⁾
	4.18	Loading platform, width	b9 (mm)	619 ⁴⁾
	4.19	Overall length	l1 (mm)	1440
	4.21	Overall width	b1 (mm)	634
	4.33	Load dimension b12 × l6	b12 × l6 (mm)	860 × 1260
	4.34	Aisle width with predetermined load dimensions	Ast (mm)	2948 ⁵⁾
	4.35	Turning radius	Wa (mm)	1592 ⁶⁾
Performance	5.1	Travel speed, with/without load	(km/h)	2.2
	5.2	Lifting speed, with/without load	(m/s)	0.0203
	5.3	Lowering speed, with/without load	(m/s)	0.0203
Drive	6.4	Battery voltage/rated capacity (5 h)	(V)/(Ah) o. (kWh)	48/120
Others	10.7	Sound pressure level LpAZ (at the driver's seat)	(dB(A))	< 70

- 1) Adaptor plate weight +45 kg
 2) Adaptor plate +158 mm
 3) Adaptor plate l3=1200
 4) Adaptor plate b9=606

- 5) Including a=200 mm (min.) operating aisle clearance
 High tolerance (+/-300 mm & +/-15°) 90° pick-up Ast=3669 mm
 With adaptor plate Ast=2857 mm
 6) With adaptor plate and EPAL1 or EPAL3
 (loaded 800, 1000 × 1200) Wa=1327 mm

C-MATIC HP 10



Safety field dimensions front min. 185 x 1650 mm (l_{sf} x b_{sf}) and rear min. 185 x 1650 mm (l_{sr} x b_{sr})
 $A_{st} = 2 * Wa + a$, with $a = 200$ mm

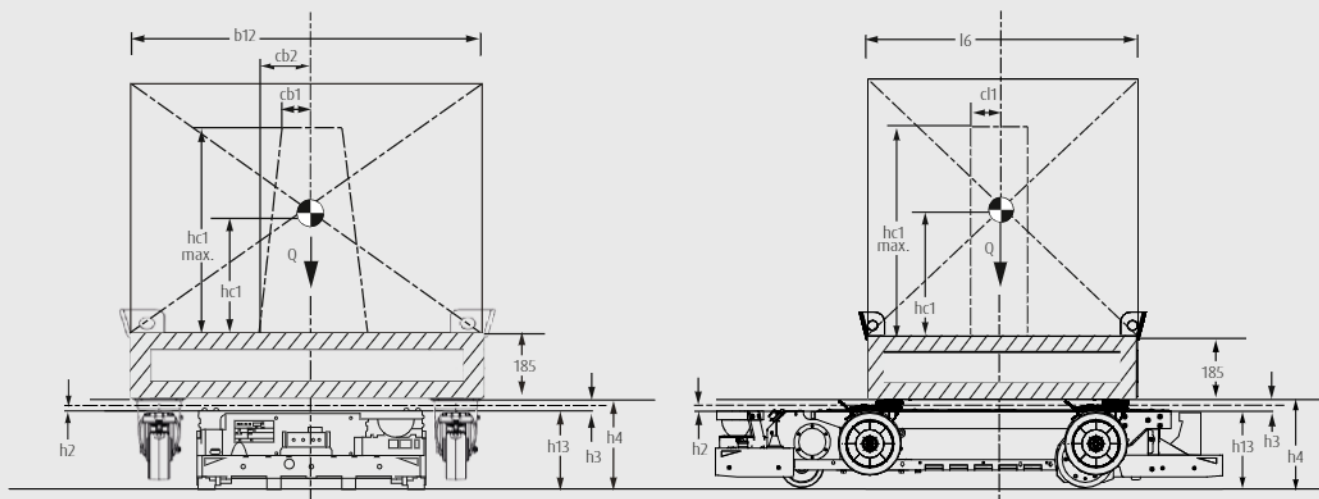
APPLICATION VARIANTS

Applications	Load carrier dimensions	Max. capacity	Overall height (lift lowered)	Lift	Overall height, max. extended
	$l_6 \times b_{12}$ [x m ²] (mm)	Q (kg)	h_{13} (mm)	h_3 (mm)	h_4 (mm)
Trolley transport	1260 × 860 × 235	1000	222	40	262
Direct pallet transport	1200 × 800 1200 × 1000	1000	380	40	420

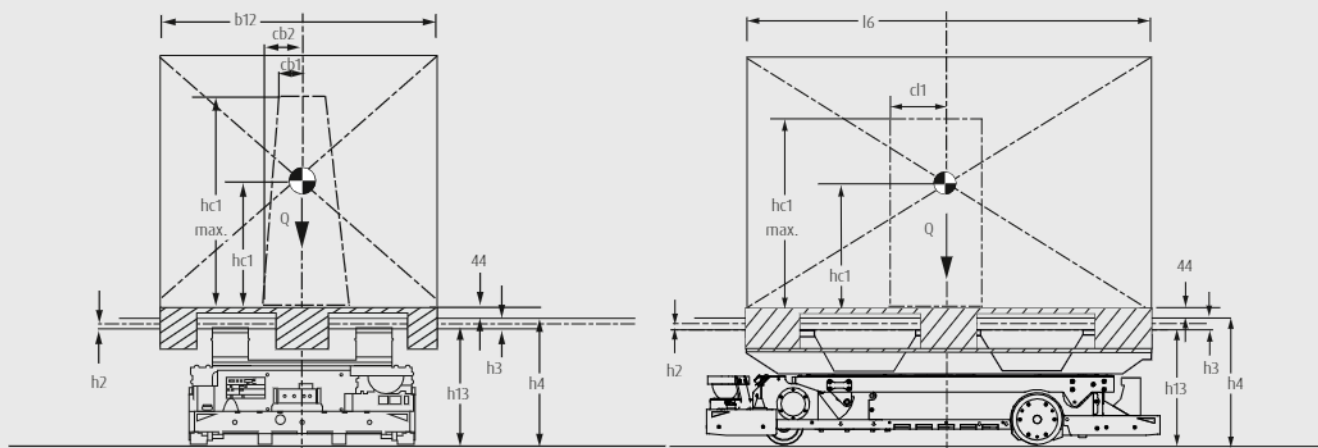
Vehicle variants	Entry height	Max height of CoG ²⁾	Max. displacement of CoG in main driving direction (l)	Max. displacement of CoG lateral to main driving direction (b)	
	$h_{13} + h_2$ ¹⁾ (mm)	h_{c1} (mm)	c_{l1} (mm)	c_{b1} (mm)	c_{b2} (mm)
Platform for trolley transport	235	800	30	60	80
Adaptor plate for direct pallet transport	400	800	30	60	80

1) h_2 = free lift 2) CoG = Centre of Gravity

TROLLEY TRANSPORT

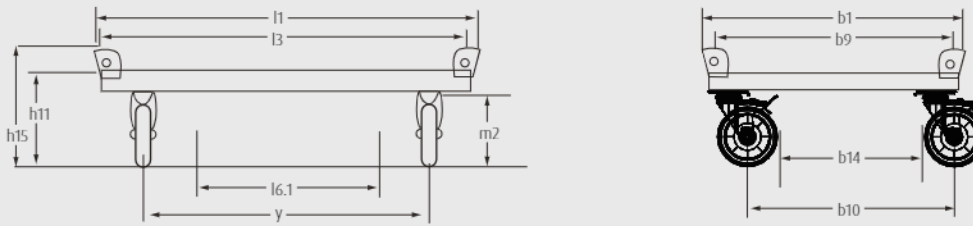


PALLET TRANSPORT



ADDITIONAL EQUIPMENT (TECHNICAL REQUIREMENTS)

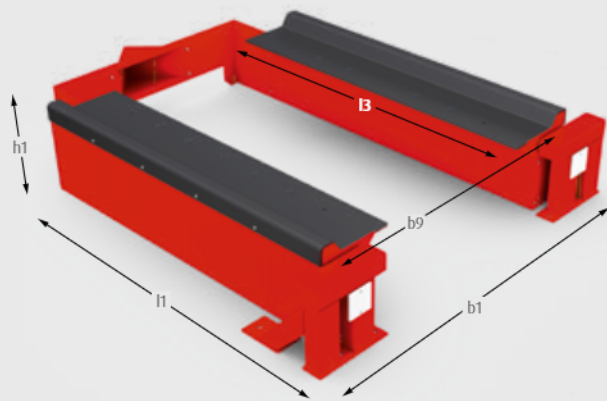
TROLLEY TRANSPORT



Characteristics	Trolley
Dimensions l1 × b1 × m2 (mm)	810 × 1210 × 235
Load dimension b9 × l3 (mm)	800 × 1200
Min. inner entry l6.1 (mm)	> 660

- Stable trolley transport is ensured
- Made for high tolerances on pick-up locations

PALLET TRANSPORT



Pick-and-drop station



C-MATIC HP with adaptor plate

Characteristics	C-MATIC HP 10 EPAL1 pallet length	C-MATIC HP 10 EPAL3 pallet length
Dimensions l1 × b1 × h1 (mm)	1610 × 1134 × 325	1762 × 1235 × 235
Pallet supporting surface h11 (mm)	280	280
Load dimension l3 × b9 (mm)	1200 × 800	1200 × 1000
Max. load capacity (kg)	1000	1000

- Stable pallet transport is ensured via pick-and-drop station
- Made for pallet transport with short-side leading

AUTOMATIC CHARGING STATION

Fully automated charging

- Designed solution includes charging station
- Intermediate charging possible during operating breaks
- Charging of several vehicles via one station
- Vehicle can also be charged while loaded



CHARGER

Model		48V 40A 1.9 kW		
Basic	Plug Type	Type F (EU) or G (UK)		
	Physical	Dimension b × l × h	(mm)	830 × 788 × 288
		Weight	(kg)	40
Length of power line		(m)	2.5	
Input	Rated voltage	(V)	230	
	Mains fuse protection	(A)	16	
	Power	(W)	3680	
	Grid frequency	(Hz)	50/60	
Output	Power	(W)	1920	
	Voltage	(V)	48	
	Current	(A)	40	
Others	Ambient temperature	(°C)	+5/+30	
	Storage temperature	(°C)	+5/+30	

STANDARD AND OPTIONAL EQUIPMENT

Model		C-MATIC HP 10 with loading platform	C-MATIC HP 10 with adaptor plate
Digitalisation	Intelligent routing algorithms	●	●
	Intelligent charging logic	●	●
	Standard interfaces to existing WMS, ERP, etc.	○	○
	Standard interfaces with infrastructure: doors, conveyors, etc.	○	○
Safety	Control buttons (On, Off, Reset)	●	●
	Personal safety around the robot with two diagonal safety scanners	●	●
	Safety field switch between platform raised and lowered	●	●
	Two diagonally positioned emergency stops	●	●
	Audio-communication	●	●
Lighting	Robot status light	●	●
	Direction indicators when turning	●	●
	BlueSpot in front and rear direction	●	●
	Indirect blue line on floor	●	●
	Multi-colour status column at the rear of the robot	○	○
Load Handling	Load pick-up with high tolerances for manual positioning on marked floor	●	–
	Natural feature navigation based on SLAM technology	●	●
	Camera-based load recognition	●	–
	Longside leading trolley transport with load dimensions of 1200 × 800 mm	●	–
	Trolley transport with customised load dimensions <1600 × 1600 mm	○	–
	Short-side leading pallet transport with EPAL1 and EPAL3 pallets	–	●
Environment	Wifi communication	●	●
	Ambient temperature +5/+40°C	●	●
Energy	Li-ION battery	●	●
	Automatic opportunity charging connectors	●	●
	Automatic charging station	○	○
	Energy charging status information based on flashlights in each corner	●	●
Service	Plug for remote hand control unit	●	●
	Hand control unit	○	○
	Can be transported on ISO forks	●	●
Driving	Differential drive with dual forward wheel drive	●	●
	High performance obstacle avoidance feature	●	●

● Standard equipment ○ Optional equipment – Not available

CHARACTERISTICS



Safety around the vehicle

Safety

- Laser scanner for reliable detection of the complete vehicle environment
- Immediate reaction to people, vehicles or obstacles to avoid collisions
- Stable load pick-up when transporting pallets and rolling racks for safe transport of goods
- Ideal combination of flexibility, productivity and maximum safety
- Emergency stop switch on both sides for additional protection in everyday warehouse life



Flexible load handling

Handling

- Infrastructure-free SLAM technology for optimum use in automated mixed operation
- Independent bypassing of obstacles for stable and trouble-free material flow
- High tolerance load pick-up for reliable transport of pallets and roller racks
- Cloud-based control software for fast implementation and effortless vehicle management
- Powerful Li-ION battery and self-charging function for 24/7 operation



Easy access to main components

Service

- Robust technology and low maintenance requirements for maximum availability
- Easily accessible components for rapid maintenance
- Fault diagnosis via service laptop or remote maintenance function for low service costs
- Extensive Linde MH service network for repairs and maintenance around the clock



Focus on customer processes as standard

Sales and realisation

- Project-specific concept design including dynamic simulation and proof of concept on site if necessary
- Combination of manual handling processes and degree of automation can be optimised to fit the customer needs
- One face to the customer for the whole process from first contact to the lifecycle phase
- Intelligent, scalable software solutions to provide customers best control of their processes
- Project management and commissioning according to Linde MH standards with unified tools and templates in the entire network

Presented by:

Subject to modification in the interest of progress. Illustrations and technical details could include options and are not binding for actual constructions. All dimensions subject to usual tolerances.



Linde Material Handling GmbH
Carl-von-Linde-Platz | 63743 Aschaffenburg | Germany
Phone + 49 6021 99 0 | Fax + 49 6021 99 1570
www.linde-mh.com | info@linde-mh.com

Printed in Germany | DS_C-MATIC_HP_10_8928_en_A_0323

